

★ OFFICIAL ★
RUBY STAR
SOCIETY
PATTERN CO.

PURL PROJECT BAG

project sheet



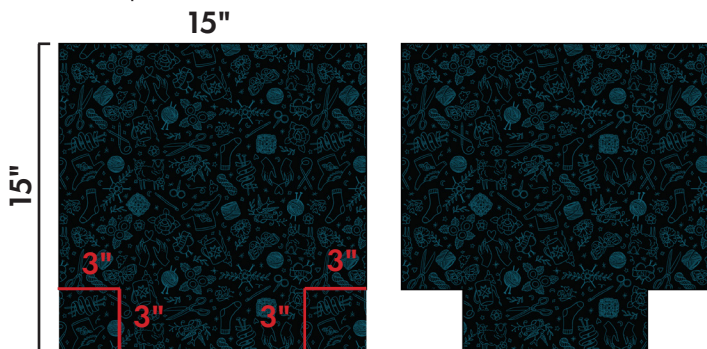
FABRIC BY SARAH WATTS

PS RS2029-2

CUTTING INSTRUCTIONS

BOTH EXTERIOR AND LINING:

Cut (2) 15" squares. From both bottom corners of each square, cut out a 3" square.



EXTERIOR POCKETS:

Cut (2) rectangles 9½" wide and 9" tall.

INTERIOR POCKETS (optional):

Cut (2) rectangles 9½" wide and 9" tall.

TIES:

If using fabric: Cut (2) 2" x WOF (width of fabric) strips.

If using ribbon or twill tape: Cut (2) 36" lengths.

INTERFACING (optional, see notes in materials list):

Cut (2) 15" squares. From both bottom corners of each square, cut out a 3" square.

SEWING INSTRUCTIONS

All seam allowances are ½" unless otherwise noted.

MAKE POCKETS

On top edge of all pocket pieces: Fold ½" to wrong side and press. Fold ½" again to wrong side and press. Stitch along fold to hem.

Fold both side edges ½" to wrong side and press.

If desired, add tags or other embellishments to pockets. Keep in mind that only the top 4½" of the pocket will be visible on the side of the bag, the rest will end up on the bottom of the bag. To center tags on pockets, fold both tag and pocket in half to find vertical centers and crease, then align creases to position.



If using interfacing, fuse to wrong sides of both exterior bag pieces following manufacturer instructions.

Fold one exterior pocket and one exterior bag in half to find vertical centers and crease. Open and place pocket wrong side against right side of bag, aligning creases and bottom raw edges. Folded side edges of pocket should be ¼" inside vertical edges of square cutouts. Pin in place and topstitch along both side edges of pocket to attach to bag, backstitching at the top.

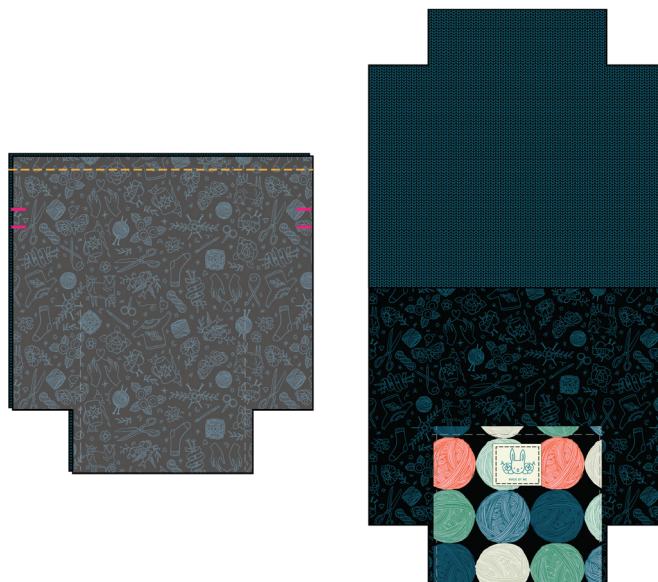


Repeat with other exterior bag/pocket, and with lining bags/pockets if doing interior pockets. *Tip: you can also stitch along the center fold of the pocket to create two smaller pockets instead of one big pocket!*

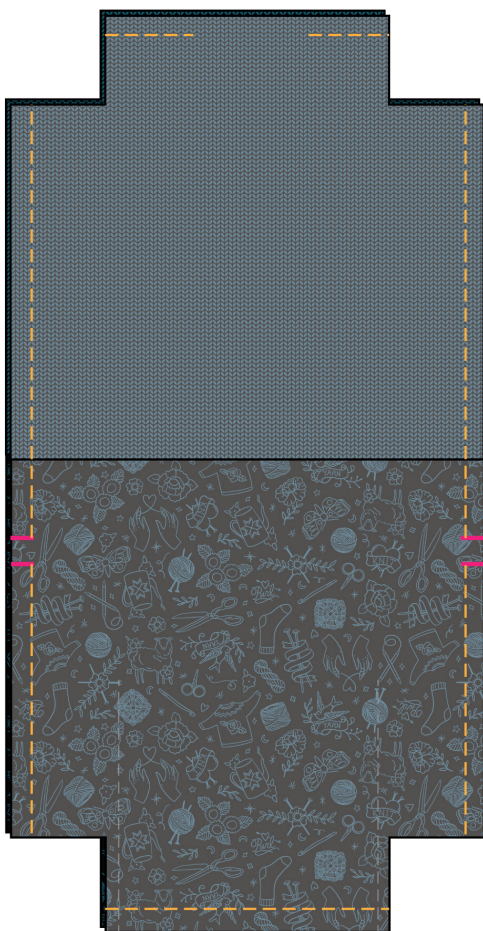
ASSEMBLY

On side edges of exterior pieces, measure and mark 3" and 3¾" down from the top edge, on the wrong side of the fabric. These are your drawstring marks.

Place exteriors and linings RST in pairs, aligning and pinning top edge. Stitch edge and press seam towards lining.

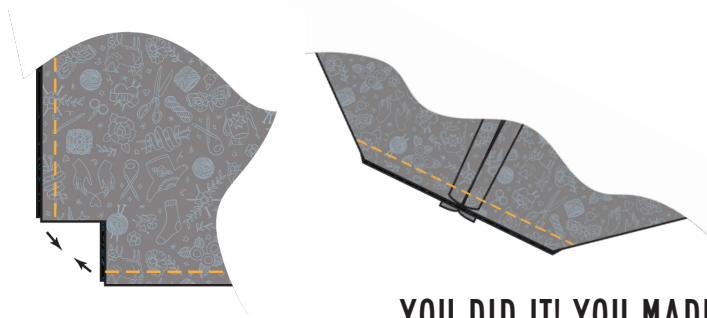


Place bag sides RST, aligning linings /exteriors and center seams. Pin around all edges. Stitch together around side edges and bottom edges. Leave edge between drawstring marks unsewn as follows: when you get to a mark, backstitch, remove from machine, start new seam at next mark, backstitch, and continue sewing. Also leave a 4"-ish opening in bottom edge of lining.



Press seams open. This might be a little awkward but just do it best you can.

Box corners: Open corner cutout and refold so that you are bringing the side seam to meet the bottom seam. Align seams & raw edges and pin. Stitch along raw edge, backstitching at beginning and end. Repeat on all four corners.



YOU DID IT! YOU MADE A PURL PROJECT BAG!!

Be sure to use #rubystarsociety, #sarahwattspanel and #purlfabric when sharing your creations so we can see them!

★ RUBY STAR
SOCIETY ★

 @rubystarsociety
@wattsalot

moda
FABRICS + SUPPLIES

Turn bag right side out through hole in lining, poking out exterior corners. Fold edges of lining opening to inside along seam allowance and edge stitch to close.

Stuff lining down inside exterior. Press well around top edge, rolling lining ever so slightly to the inside.

Ensure that lining is flat and smooth and side seams of lining and exterior are aligned. On exterior, measure and draw lines with fabric marking tool $2\frac{1}{2}$ " and $3\frac{1}{4}$ " down from top edge. This should align with the tops and bottoms of the drawstring openings in exterior. Topstitch through exterior and lining all the way around on lines, backstitching at beginning and end.

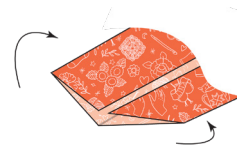


MAKE DRAWSTRING

If using fabric, for each WOF strip: fold strip in half lengthwise with wrong sides together and press. Open and fold each raw edge in to meet crease with wrong sides together and press. Refold along original crease and repress the entire strip.

Using a large zigzag stitch, stitch along double folded edge down entire strip, backstitching at beginning and end. Be sure to use a zigzag - if you use a straight stitch the thread might break when you tug on the drawstring.

Both fabric or ribbon: Using a safety pin or bodkin, thread one tie through drawstring casing, going all the way around and **coming out the same opening you went in**. The drawstring will basically make a U shape around the bag.



With mouth of bag open all the way, tie ends of tie into a knot and cut off extra. Repeat with other tie and other drawstring opening. To close bag, pull on both knots at the same time. *Tip: thread a large bead onto drawstring before knotting for extra decoration!*

PURL PROJECT BAG

Sarah Watts' yarn-themed collection Purl is the perfect fabric for making project bags! These drawstring bags give small and medium sized knitting projects a safe place to be when you take them on the go. Customize the number and placement of pockets to your liking, and use fabric or ribbon for the drawstring.

All fabrics shown are from Purl by Sarah Watts for Ruby Star Society.



FABRIC REQUIREMENTS

FQ=fat quarter (18" x 21")

EXTERIOR (canvas or quilting cotton):

½ yard or 2 FQs

LINING (quilting cotton):

½ yard or 2 FQs

POCKETS (canvas or quilting cotton):

¼ yd or 1 FQ**

INTERFACING* (optional):

½ yd 44" wide or 1 yd 20" wide

DRAWSTRING:

⅛ yd quilting cotton **or**

2 yds ½" ribbon or twill tape

OPTIONAL: 2 large wooden beads

* If using canvas for exterior, use either no interfacing for a lighter bag, or lighter interfacing like Pellon Shape Flex SF101 for a sturdier bag that stands rigid when open. If using quilting cotton for exterior, interfacing is recommended - use a lighter interfacing like Pellon Shape Flex SF101 for a lighter bag, or a heavier interfacing like Pellon Peltex 71F for a sturdier bag that stands rigid when open.

** pocket yardages are exact, round up a few inches if you would like some wiggle room

★ RUBY STAR
SOCIETY ★

moda
FABRICS + SUPPLIES

PS RS2029-2



Copyright 2021 Ruby Star Society. Copying or otherwise redistributing is strictly prohibited. For personal use only.