

★ OFFICIAL ★
RUBY STAR
SOCIETY
PATTERN CO.

TABLE RUNNER & NAPKINS

project sheet



FABRIC BY ALEXIA MARCELLE ABEGG

PS RS4007

CUTTING INSTRUCTIONS

RUNNER



RS4008-14 Chore Coat

Cut (2) 15½" WOF strips. Subcut (6) 10"x15½" rectangles.



RS4015-18 Cross Weave

Cut (2) 15½" WOF strips. Trim each to 42⅛" long.



RS4007-JLC Junior Layer Cake

Cut (28) assorted 4¼" squares.

NAPKINS

From each FQ, cut a 17½" square.

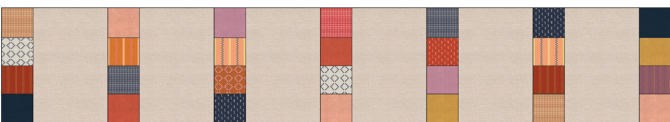
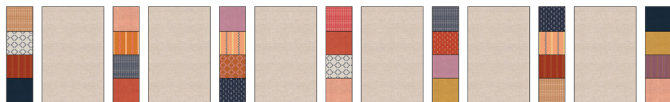
SEWING INSTRUCTIONS

(all seam allowances ¼" unless otherwise noted)

RUNNER

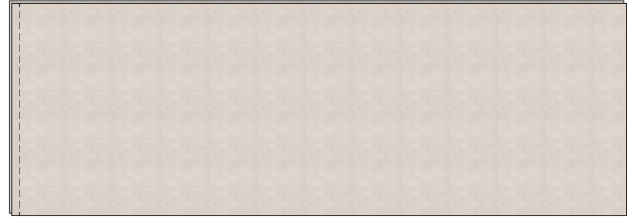
Piece 4¼" squares together in columns of 4, pressing seam allowances open. Make 7 columns.

Join columns and 15½" sides of Chore Coat rectangles, starting and ending with a column. Press all seams towards columns.

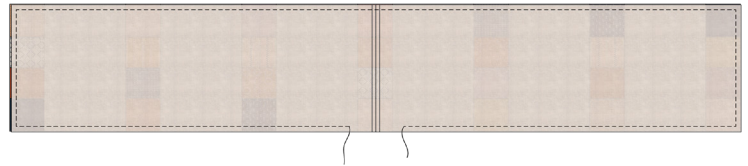


Note: You can make runner longer or shorter by adding or omitting Chore Coat/column units. Just be sure each short end of your runner ends in a column of squares.

Piece short ends of two Cross Weave strips together to make one long backing strip. Press seam open.



Place runner and backing RST, aligning all edges, and pin. Stitch around all edges, leaving 5" opening in one long edge and backstitching at beginning and end..



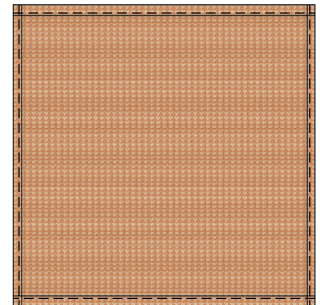
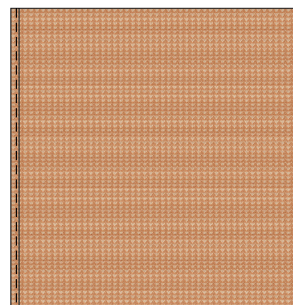
Clip corners and turn right side out, gently poking out corners. Press. Fold opening edges ¼" to inside and pin. Topstitch all the way around entire runner ⅛" from edge to close hole and give a nice finish.

Optional: hand stitch large tassel to each corner. (This helps weigh the runner down on your table.) Directions for tassel on page 3.

NAPKINS

Fold and press opposite edges ¼" towards wrong side. Then, fold and press same edges another ¼". Stitch along inner folded edge to hem.

Repeat process with remaining two edges, backstitching at beginning and end. The corners can be bulky, so it helps to start on the fabric and backstitch to the beginning, then sew forward.



Repeat with all napkin squares.

Note: Many of the wovens do not have right or wrong sides, so it doesn't matter which side you designate as the "wrong" side, as long as you hem all edges towards the same side.

TASSELS

Cut a 5x5" square of cardboard. Wrap yarn around square about 15-20 wraps, or until desired fullness (this may vary depending on the thickness of your yarn) and cut tail.

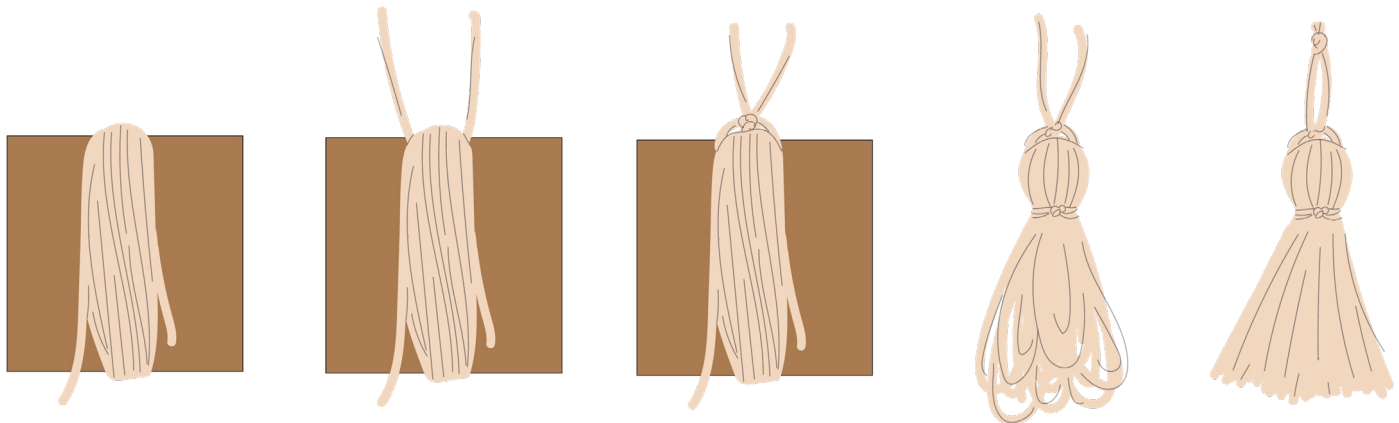
Cut 8" length of yarn. Thread it under wraps on one side and pull up to top edge. Tie snugly. Leave long tails.

Cut another 8" length of yarn. Gently slide wraps off cardboard, keeping them together in a bunch. Tie yarn around wraps about 1" below top of tassel, tying and wrapping around several times for security.

Clip all the loops on the bottom side of tassel to make individual strands. Trim so they are all the same length and to a final tassel height of about 4½" (not including upper ties).

Tie upper ties in overhand knot about 1½" above tassel. Handstitch knot to back side of corner of runner.

Repeat to make and attach 3 more tassels.



YOU DID IT! YOU MADE A TABLE RUNNER & NAPKINS!

Be sure to use #rubystarsociety and #warpandweftfabric when sharing your creations so we can see them!



@alexiamarcelleabegg
@rubystarsociety

★ RUBY STAR
SOCIETY ★

moda
FABRICS + SUPPLIES

Copyright 2020 Ruby Star Society. Copying, selling, or otherwise redistributing is strictly prohibited. For personal use only.

TABLE RUNNER & NAPKINS

Alexia Marcelle Abegg's Warp & Weft woven fabrics are perfect for creating a beautiful, sophisticated tablescape.

Finished runner: 15" x 83¼"

Finished napkin: 16½" square

FABRIC REQUIREMENTS

RUNNER



RS4008-14 Chore Coat - Natural

1 yd



RS4015-18 Cross Weave - Natural

1 yd



RS4007-JLC

1 Warp & Weft Junior Layer Cake

NAPKINS

Assorted FQs. Each FQ makes 1 napkin.

ADDITIONAL

Natural colored worsted weight yarn for tassels

KEY

RST = right sides together

SA = seam allowance

All seam allowances ¼" unless otherwise noted.

Please read all instructions before beginning.



★ RUBY STAR
SOCIETY ★

moda
FABRICS + SUPPLIES

PS RS4007



7 52106 53539 8

Copyright 2020 Ruby Star Society. Copying, reselling, or otherwise redistributing is strictly prohibited. For personal use only.