



Maison de Garance

by French General



13547 11*



13550 11*



13548 11*



13549 11*



13529 52*



13552 11



13551 11



13553 11*



13545 11



13546 11



13553 16



54088 15



13546 12

* 54" wide, Linen/ Cotton, reduced to show pattern.



Paris in the Fall Block of the Month — TTT146/TTT146G Finished Quilt Measures 66" x 86"

In the 18th century Maison de Garance - the House of Garance - was one of the only dye houses in France to cultivate all of the shades of the garance flower - from deep red to chocolate brown. The walls of Maison de Garance were covered in painted leaves which were hand-shaded colors of the garance plant to show off all of the hues.



13545 12*



13546 13*



13547 12*



13529 51*



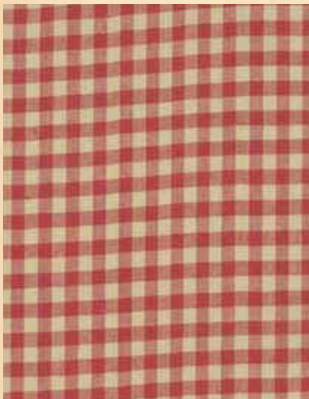
13551 14



13552 14*



13550 12*



12555 22



12555 23



12555 21



13552 12*



12555 20



12555 24



12555 11



12555 26



13529 55*



13546 20*



13545 16



13551 18



13549 15



13553 15



54088 16



13547 14



13548 14



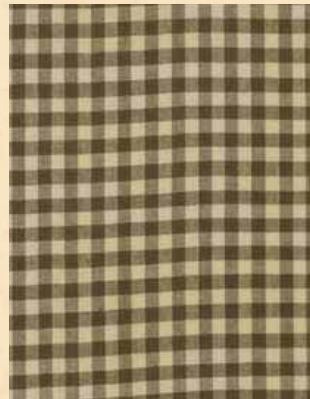
13550 14*



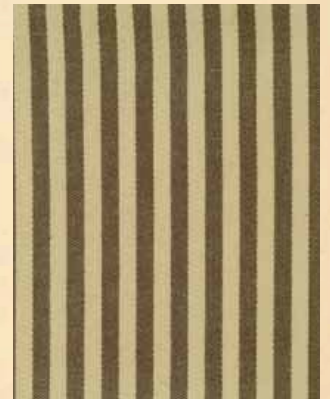
12555 12



12555 16



12555 14



12555 15

* 54" wide, Linen/ Cotton, reduced to show pattern.



13553 12



13551 17



54088 18 * 54" wide, Linen/ Cotton, reduced to show pattern.



13552 18*



12555 13



12555 25



12555 17



13548 13*



13549 13



13547 13*



13550 13



12555 18



12555 19



13546 16



13529 53

Maison de Garance

by French General



OCTOBER DELIVERY

SKUS: 38 PRINTS, 16 WOVENS,
7 LINEN & COTTON
CONTENT: 100% COTTON,
55% LINEN & 45% COTTON

- ASST. 12555-12 12 YARDS OF EACH WOVEN
- 12555AB BUNDLE: 16 SKUS WOVENS
- ASST. 13545-15 15 YARDS OF EACH PRINT
- ASST. 13545-10 10 YARDS OF EACH PRINT
- ASST. 13545-10H 10 YARDS OF 19 SKUS*
- 13545AB BUNDLE: 38 SKUS PRINTS
- 13545F8 BUNDLE: 38 SKUS PRINTS
- 13545JR JELLYROLL - (40) 2½"X45" STRIPS - PK 4
- 13545LC LAYER CAKE - (42) 10"X10" SQUARES - PK 4
- 13545PP (42) 5"X5" SQUARES - PK 12
- ASST. 54088-15 15 YARDS OF EACH LINEN/COTTON
- ASST. 54088-10 10 YARDS OF EACH 54" LINEN/COTTON

54" Linen / Cotton



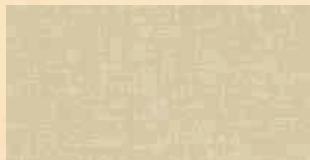
54086 42



54086 13



54086 41



54086 19

16" Toweling



920-141 reduced to show pattern



920-142 reduced to show pattern

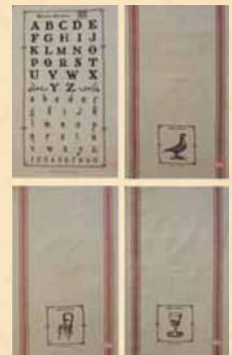


920-143 reduced to show pattern

Bags



995 149 - Patchwork Bag
Multiple 3



Towel Pack (set of 4)
995 147 Multiple 3



995 148 - Messenger Bag
Multiple 3



Monogrammed Patch Bag
995 146 Multiple 6

Ribbons



3 yd. 2109 101/ 25 yd. 2109 107



3 yd. 2109 99/ 25 yd. 2109 105



3 yd. 2109 100/ 25 yd. 2109 106

*3 yd. on antiqued spool/ multiple 6
*25 yd. on cardboard spool/ multiple 25



3 yd. 2109 96/ 25 yd. 2109 102



3 yd. 2109 98/ 25 yd. 2109 104



3 yd. 2109 97/ 25 yd. 2109 103